



ANIMAL– Technical Rider

General

The Cirque Alfonse circus company will hereinafter be referred to as *The Company* and the production/presentation company or presenter will be referred to as *The Producer*.

This technical rider sets out all the specifications and requirements for the operation and success of the Cirque Alfonse Company’s “Animal” show and is an integral part of the contract. This rider may not be modified without the prior consent of Cirque Alfonse’s technical director. Nonetheless, it serves as a framework and basis for negotiations. All changes must be included in an agreement with the Cirque Alfonse Company’s representatives.

Table of contents:

1. Performance length
2. Cast & Crew
3. Performance space
4. Set
5. Stage plot and inventory
6. Production schedule
7. Sound
8. Lighting
9. Rigging
10. Control Booth
11. Services
12. Contact information

01) Performance length

75 minutes without intermission

Doors open 15 minutes before the show. If there is a training area back stage doors can open 30 minutes before

02) Cast & Crew

6 acrobats
3 musicians
1 soundwoman
1 technical director / lighting operator
1 tour manager
+ occasionally 1 company representative

Total 12 persons (occasionally 13)

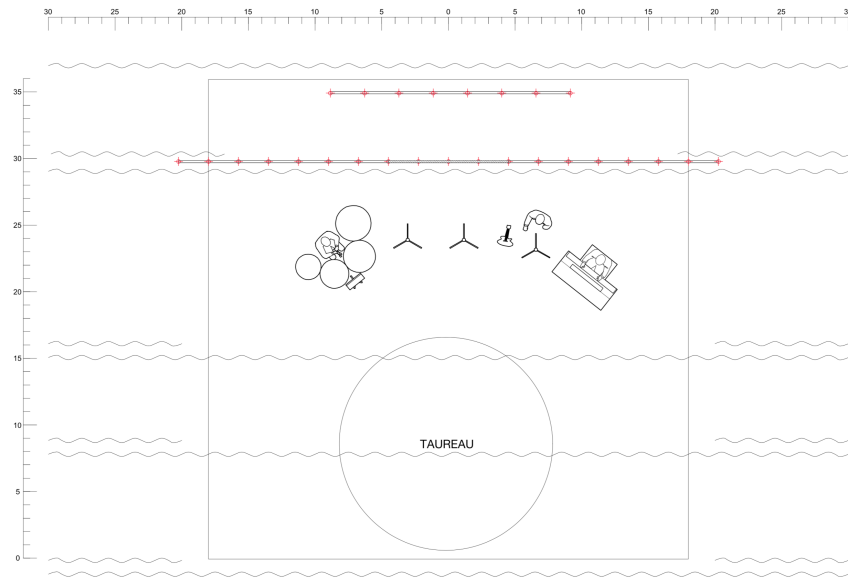


ANIMAL– Technical Rider

03) Performing space:

Dimensions:

The minimum performance space is **36' (11 m)** wide by **36' (11 m)** deep and **22' (7 m)** high (minimum stage requirement) in addition to the wing clearance and space to move on each side.



Stage:

Hardwood or plywood floor without any rake and free of imperfections

The floor must be black

If the stage is made of riser, a minimum of 6 legs is required for each risers

The floor has to be clean and flat

Fly system:

The theatre must be equipped with a fly system that offers a choice of lighting and stage masking positions. Minimums of 8 battens are required above the stage on which to hang lights. Moreover, stage masking battens must also be available, depending on the configuration and stage/house ratio.

Fly movements will be performed during the show.

Wings:

The wings must be free of obstructions during stage rehearsals and shows. The cables from the vertical battens for the laterals must be hoisted overhead or secured to the floor with tape and covered by carpets. Blue backstage lights must also be installed in each wing and the upstage corridor.

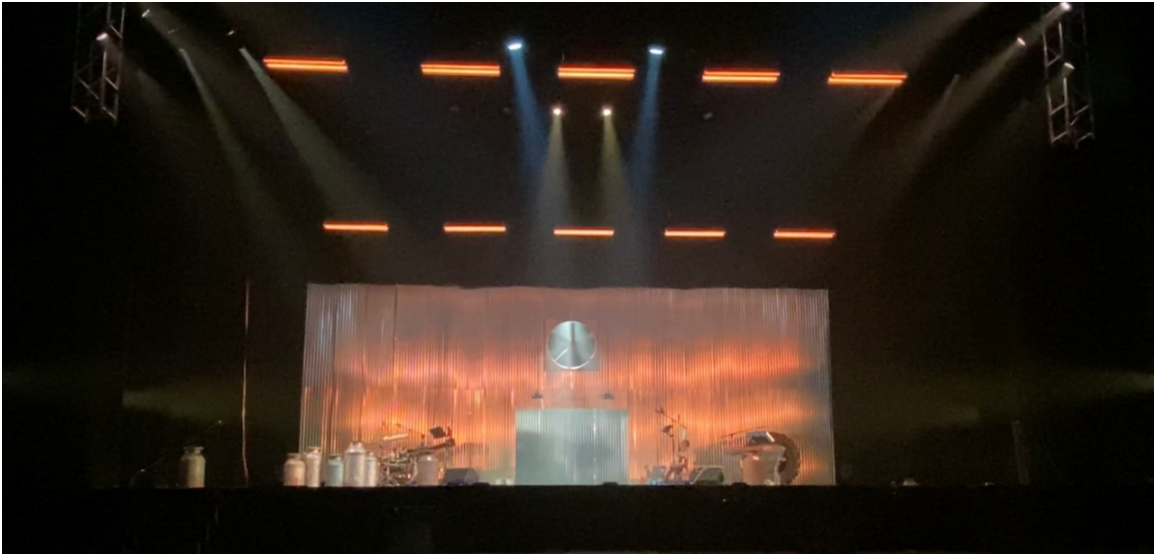
Stage masking:

- 4 Flat black velour borders
- 4 Pairs flat black velour legs: (12' - 3.7 m) wide x (28' - 8.5 m) high
- 1 Full black backdrop



ANIMAL– Technical Rider

04) Set



The set design is made of steel sheets bolted together and hung with chains on a lineset or truss

Dimensions: **38'6** (11,75m) (width) x **15'6** (4,75m) (height)

Weight : Approx **400 lbs** (90 kgs)

Mechanical Bull: Needs a single phase 120v 20A or 240v 20A 60hz circuit.

Blower: Single phase 120v 15A

05) Stage plot & inventory:

The Producer must supply and send the plans and inventories for the equipment described below, as soon as possible so that the Cirque Alfonse Company can adapt to the space and stage. The Producer must supply the plans at least one (1) month prior to the first performance. The plans must be in dwg, vwx or pdf format.

- 1) **FLOOR PLAN AND SECTION:** showing the stage, backstage, unloading area, the audience's fields of vision, the house, the dressing rooms and the rehearsal room(s) (if possible).
- 2) **LIGHTING PLOT :** showing all the lighting positions, all instruments hung in permanent positions, the locations of all battens and electrical hook-ups and all of the theatre's permanent stage masking positions.
- 3) **INVENTORY LISTS:** all of the theatre's available sound, lighting and stage masking equipments



ANIMAL– Technical Rider

06) Production schedule and local crew

The Company will need a technical director (provided by the Producer) who is familiar with the location and/or the theatre the Company will be performing in. Will act as an intermediary between the Company’s production and the local technical team. The Producer agrees to provide the services of a professional, experienced local team that can carry out all setup, strike, loading and unloading tasks according to their assigned departments. The local team will be supervised by the Company’s personnel during all operations.

TYPICAL 1 DAYS SCHEDULE

Pre-Hang is required to for a 1 day Schedule

Day 1		
8:00 @ 13:00	Load-in, light verification and focus	4 electricians
	Stage masking and stage set installation	2 stagehands
	Sound installation	1 sound tech
		1 Flyman
	Costume washing	1 wardrobe
12 :00 @ 13 :00	Break Sound	
13 :00 @ 14 :00	Break Lighting and Stagehands	
13:00 @ 16h30	audio Line-check et sound-check	1 sound tech
14h00 @ 18h00	Stage set-up continued if needed	2 stagehands
	Light focus continued	2 electricians
15h30 @ 17h30	Acrobatic apparatus set-up, « rehearsals »	acrobats
17h30 @ 18h30	Break	ALL
18h30	Stage cleaning	Show team
19h00	Showcall	Show team
19h30	Doors open	
20h00 @ 21h25	Showtime	Show team
21h30	Tear-down	Load-in team

SHOW TEAM: 1 technical director, 1 head electrician, 1 head sound technician, 1 head carpenter, 1 flyman

<< The show team must be the same for rehearsals as for shows. >>

Whenever possible, having an extra load-in day allows us to make the load-in lighter and more comfortable for all.



ANIMAL– Technical Rider

07) Sound

The Producer must supply the following equipment:

PA system

PA system 3 ways with subwoofer, capable of producing 30 to 20 000 Hz at 115 db SPL-A without distortion on all listening position of the venue.

Console

- 1 Digital sound desk (48 inputs -16 out)

Monitors

- 4 4x monitors on 2 mixe on stands
- 3 In-ear monitors (**2 supplied by Cirque Alfonse**)
- 3 Yamaha mg06 (**supplied by Cirque Alfonse**)

Microphones

- 3 Dpa 4099 with bell clips and 2 with wireless adapters
- 1 Sm 57
- 2 Km 184
- 4 Sm 58
- 6 Active Di
- 2 Wireless Beltpacks
- 2 Wireless Handhelds
- 1 Wireless In-ear-monitor
- 1 12in/4out Stage Box
- 2 12in/6out Stage Box
- 9 Microphone stands, 3 x Round base, 3 x Small Boom, 3 x Tall boom
- 10 3m xlr
- 20 5m xlr
- 20 10m xlr

Communication

- 3 Intercom stations with headset and call lights (Lights, Sound, and stage right)

Note: All substitutions or modifications must be validated by Cirque Alfonse Company's technical director or sound technician.



ANIMAL– Technical Rider

PATCH

Input	Instrument	Mic	Stand	Position	DCA
1	Pieds	C411(Alfonse)		SR	6 Pied
2	Snare	Sm57	Court	SR	1 Perc
3	Tom 1	e904	Clip	SR	1 Perc
4	Tom 2	e904	Clip	SR	1 Perc
5	Roland	Active Di		SR	1 Perc
6	Percussion	KM 184	Court	SR	1 Perc
7	Hats	KM 184	Court	SR	1 Perc
8	Spd L	Active Di		SR	1 Perc
9	Spd R	Active Di		SR	5 Vx
10	Josi VX	Sm 58	Haut	SR	1 Perc
11	Jug	C411(Alfonse)		SR	1 Perc
12	Cajon	Sm57	N/a	SR	1 Perc
13	Euphonium	Dpa 4099		SR	5 Vx
14	Ant VX	Sm 58	Straight Atlas	SR	5 Vx
15	Guillaume Vx	Sm58	Tall Boom	SL	
16	Keys L	Active Di		SL	6 Pied
17	Keys R	Active Di		SL	2 Keys
18	Pied	C411(Alfonse)		SL	5 Vx
19	Bass	Active Di		SL	4 strings
20	Davi Vx	Sm 58	Tall Boom	SL	4 strings
21	Guitar	Pre-amp		SL	1 Perc
22	Banjo	SF Beltpack		SL	3 Horns
23	Flute	SF Headset		SL	3 Horns
24	Trumpet	Dpa 4099(Beta 98)	Clip	SL	5 Vx
25	Sax	Dpa 4099(Beta 98)	Clip	SL	5 Vx
26	Joe VX	SF HH	Straight Atlas	SL	
27	Julie Vx	SF HH	Straight Atlas	SR	
28	Pied	PCC 160		CENTRE	
29	Pied	PCC 160		CENTRE	
30	Talk Back	Sm58		CONSOLE	

OUTPUTS

1	Down Stage Left and Right
2 & 3	On stage wedge Sax and vocal
4 & 5	IEM Guitar
6 & 7	IEM Keys
8 & 9	IEM Drum



ANIMAL– Technical Rider

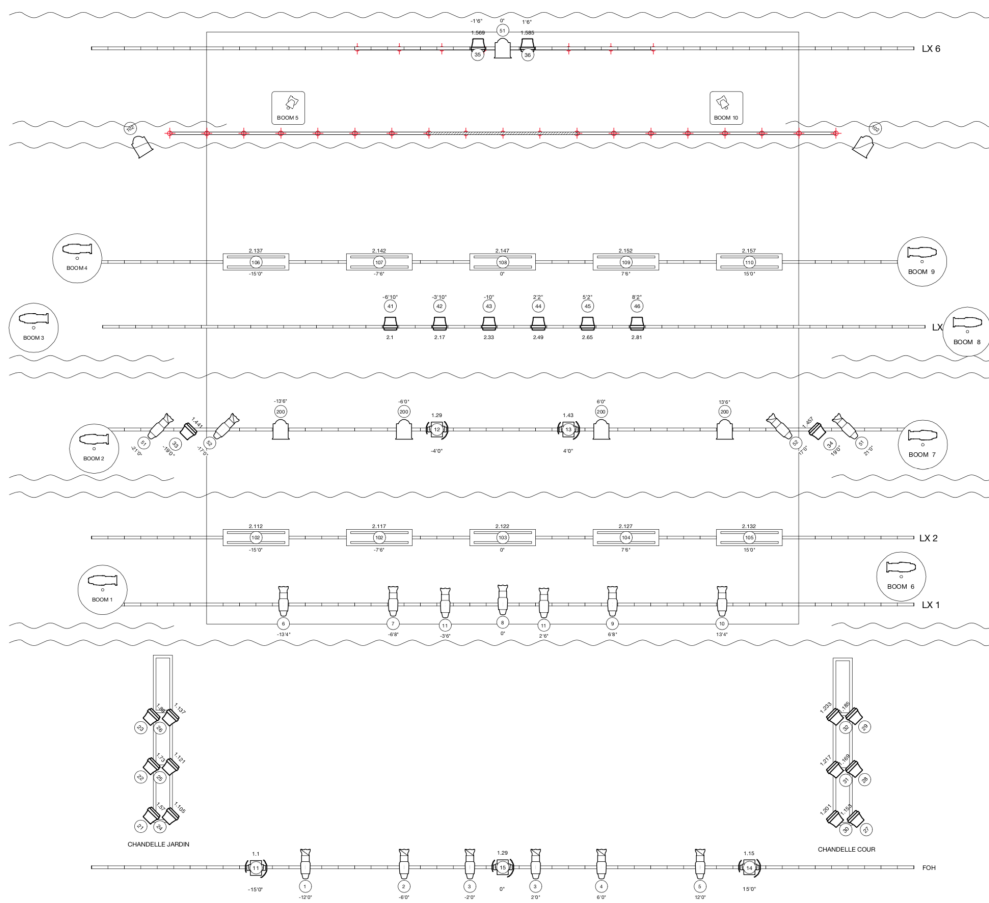
08) Lighting

The Producer must provide the following equipment:

- 4x Fresnels 2k or PC 2kw
- 8x Fresnel 1k or PC 2kw
- 14x Profile spotlights, 26 degrees 750 W
- 20x Profile spotlights, 36 degrees, 750 W /
- 4x Profile spotlights , 50 degrees, 750w,
- 34x LED RGBW 120W zoom 10-50deg
- 5x Moving light wash RGBW 5-50deg
- 2x ColorForce II 72
- 1x Fog machine – MDG ATMe

The Company will provide the following equipment:

- 1 Grand Ma on PC as light desk
- 10x Custom LED RGBW fixture





ANIMAL– Technical Rider

09) Rigging

Rigging:

The Company needs two rigging points for a rehearsal leach.

2x Rigging points mid stage on lineset or grid Capacity of 1100lbs (500kg)

The rigging material will be supplied by the Company.

The show will be carried out as follows:

10) Show operation

The show is a single 80 minute set.

The Company's stage managers will be in charge of all sound and light operation.

The Company's stage managers must be set up in- house and facing the stage in order to run the shows.

They cannot be in a closed booth.

The house curtain will not be used.

Fly movement will be performed during the show. 2 lineset at the same time.

***The musicians, at the beginning of the show, will do the welcoming and safety message

11) Service

The Company require:

Spring water (non-carbonated) at all time, ideally not from single-use bottles.

1 kg of ice is required for each show in case of injury

The Company would appreciate:

12 x beer bottles after each show

1 x white wine bottle after each show

1x red wine bottle after each show

CATERING :During set-up, strike, workshops and performances, PRESENTER shall supply the ARTIST with a light buffet of fresh uncut fruit, cheeses, vegetables and healthy sandwiches including non-meat items. At all times (set-up, performances and tear-down), PRESENTER shall supply the ARTIST with juice, milk, coffee, and tea.

USHERS: The Presenter agrees to provide the services of ushers and house staff for the show (audience's arrival and departure).

DRESSING ROOMS: The Company will need 5 small dressing rooms for 2 people or 2 large dressing rooms for 5 people. They must be in good condition, clean, sufficiently heated and safe. The rooms must be equipped with chairs, tables with mirrors, sufficient lighting, toilets, showers with 12 towels, costume racks and costume hangers.



ANIMAL– Technical Rider

LAUNDRY: The theatre must be equipped with washers and dryers in which to wash the costumes after the shows. Fans would also be needed for drying certain costume elements.

**A wardrobe attendant will be required to help with the costumes and washing before every shows.

REDORDING AND PHOTOGRAPHY: The Presenter must ensure that the show is not recorded by any means: microphone, video, camera or other. No cameras, with or without flash, are permitted during the rehearsals or shows.

TECHNICAL SECURITY: The Presenter agrees to protect and insure the Company's personnel, equipment, accessories, costumes and personal effects left on the site where the Company will be performing (in the theatre, dressing rooms, control booth, house, production office, hall, dock, lighting positions). The Producer agrees to secure said locations 24 hours per day, for the Company's entire stay (until its departure).

12) Contacts

Alice Kop, Tour manager: +1 (514) 561-6225

alice.kop@hotmail.com

Jean-François Piché, direction technique et éclairage : +1 (514) 961-3850

jeanf.piche@gmail.com

Katie Sweeney, Sound engineer

katienicsuibhne@gmail.com

Antoine Carabinier-Lépine, Artistic Director:

antoine111@hotmail.com

Julie Carabinier, Artistic Director

juliecarabinier@hotmail.com

All additional information will be provided upon request at any time. You can directly contact the person concerned, listed above.

John Lambert : Touring Agent for USA, Latin America, Asia-Pacific

info@johnlambert.ca

Vincent Messenger, Dolce Vita Spectacles : Touring Agent Europe, Canada + (514)774.3048 /

info@dolcevistaspectacles.com / <http://dolcevistaspectacles.com>

E-mail: cirquealfonse@gmail.com

Web site: www.cirquealfonse.com